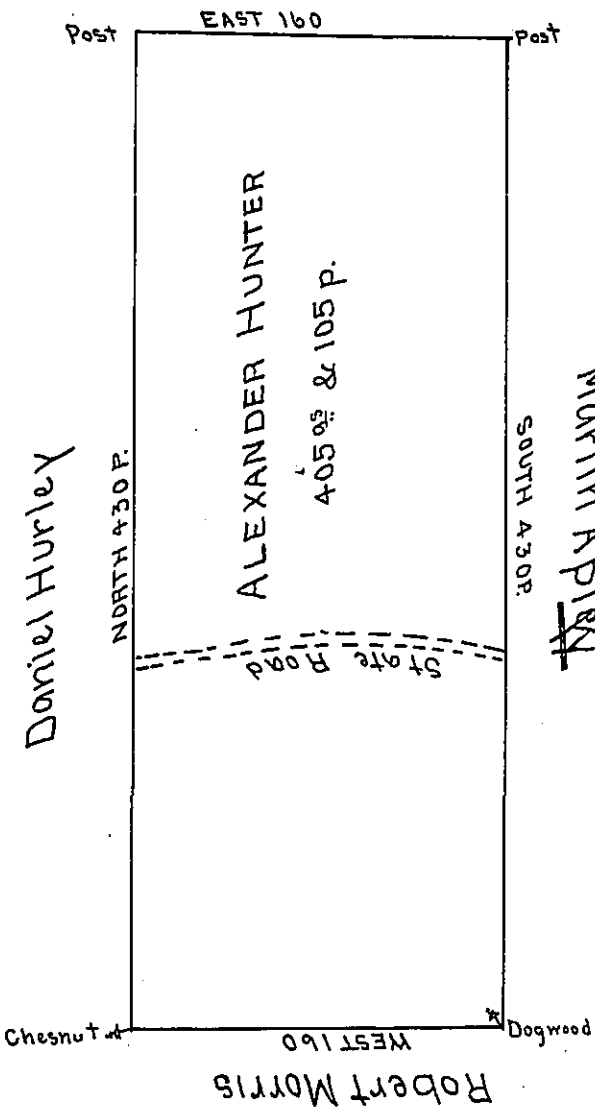


John Simpson



U- 29

Martin A. P. 1821

Situate on the dividing Ridge whence the Waters descend to Black Lick & to Conemaugh Creek in the Township of Quemahoning & Wheatfield in the Counties of Bedford & Westmoreland containing 405 Acres & 105 perches and allowance for Roads &c. Surveyed for Alexander Hunter the 14th day of November 1794 on Warrant dated the 3^d day of May 1793.

James Ross D.S.

Daniel Brodhead Esq. S.G.

George Woods Junr D.S.

IN TESTIMONY that the above is a copy of the original remaining on file in the Department of Internal Affairs of Pennsylvania, made conformably to an Act of Assembly approved the 16th day of February, 1833, I have hereunto set my Hand and caused the Seal of said Department to be affixed at Harrisburg, this twenty-ninth day of March 1905

Asa D. Pomeroy
 Secretary of Internal Affairs.